

VORTAC SSI
109.8
 Chan **35**

APP CRS
359°

Rwy Idg
 TDZE
 Apt Elev

N/A
N/A
26

VOR/DME-B
 BRUNSWICK GOLDEN ISLES (BQK)

When local altimeter setting not received, use Malcolm McKinnon altimeter setting and increase all MDA 20 feet.

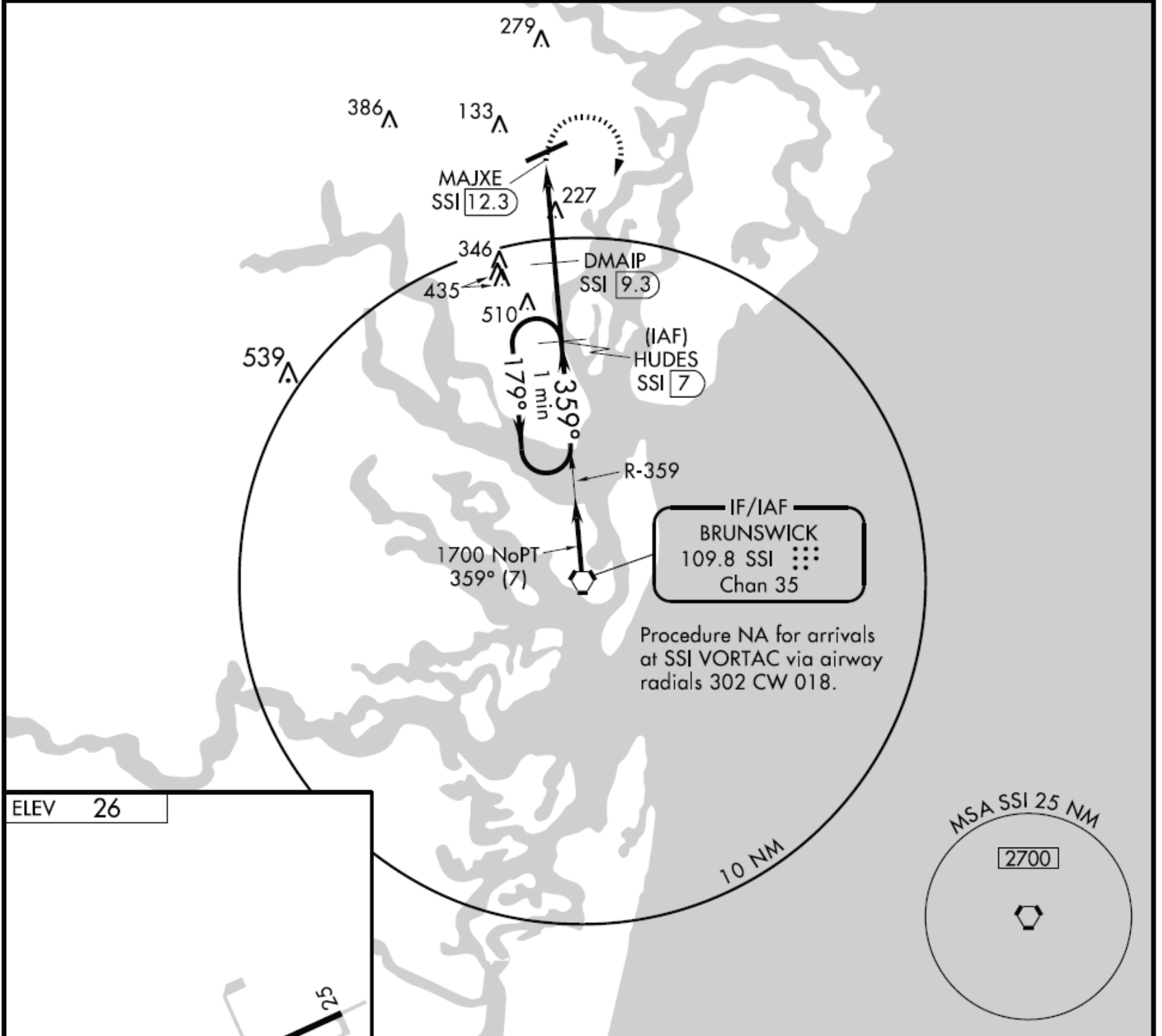
MISSED APPROACH: Climbing right turn to 1700 via SSI VORTAC R-359 to HUDES/7 DME and hold.

AWOS-3
124.175

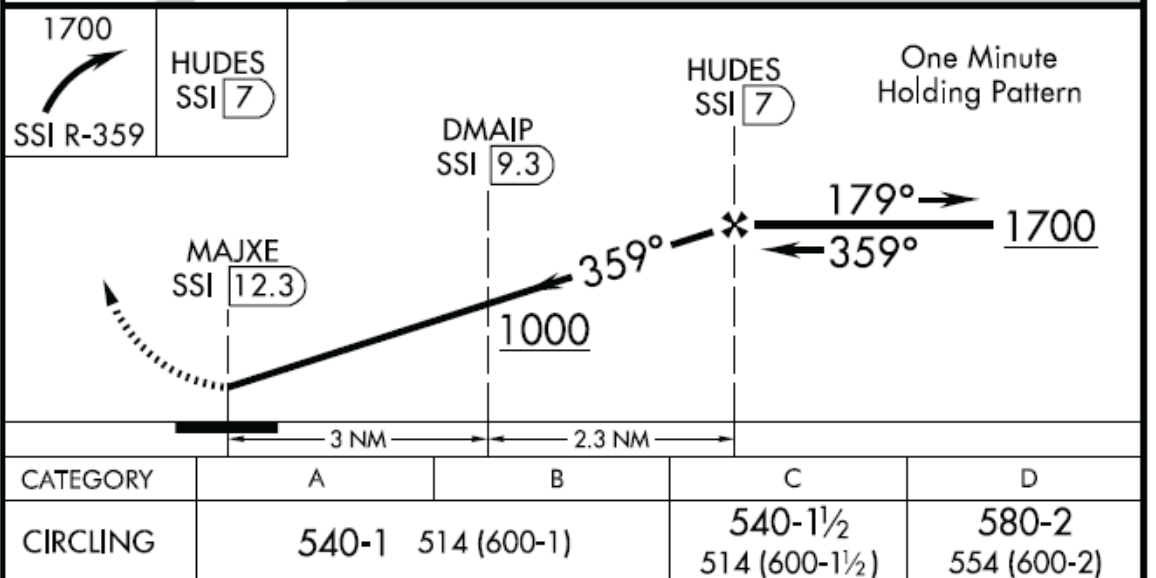
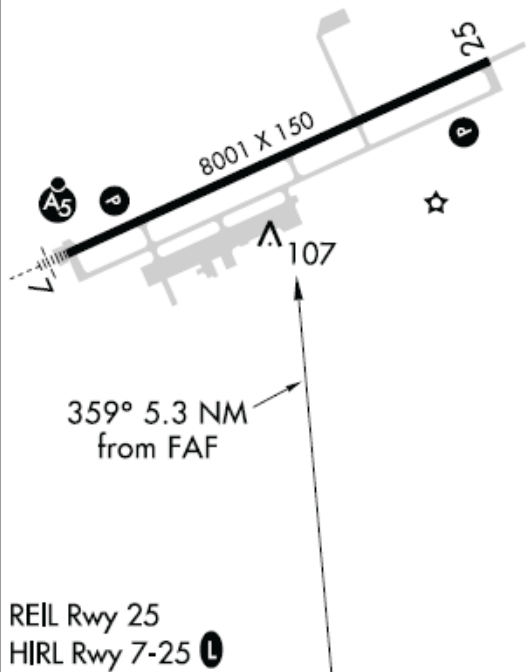
JACKSONVILLE CENTER
126.75 277.4

CLNC DEL
126.75 277.4

UNICOM
122.8 (CTAF) 0



ELEV **26**



CATEGORY	A	B	C	D
CIRCLING	540-1	514 (600-1)	540-1½ 514 (600-1½)	580-2 554 (600-2)

It's probably been a while since you had to shoot one of these—a VOR approach using a facility not on the field and requiring a circle-to-land maneuver—for-real. Do you remember how?