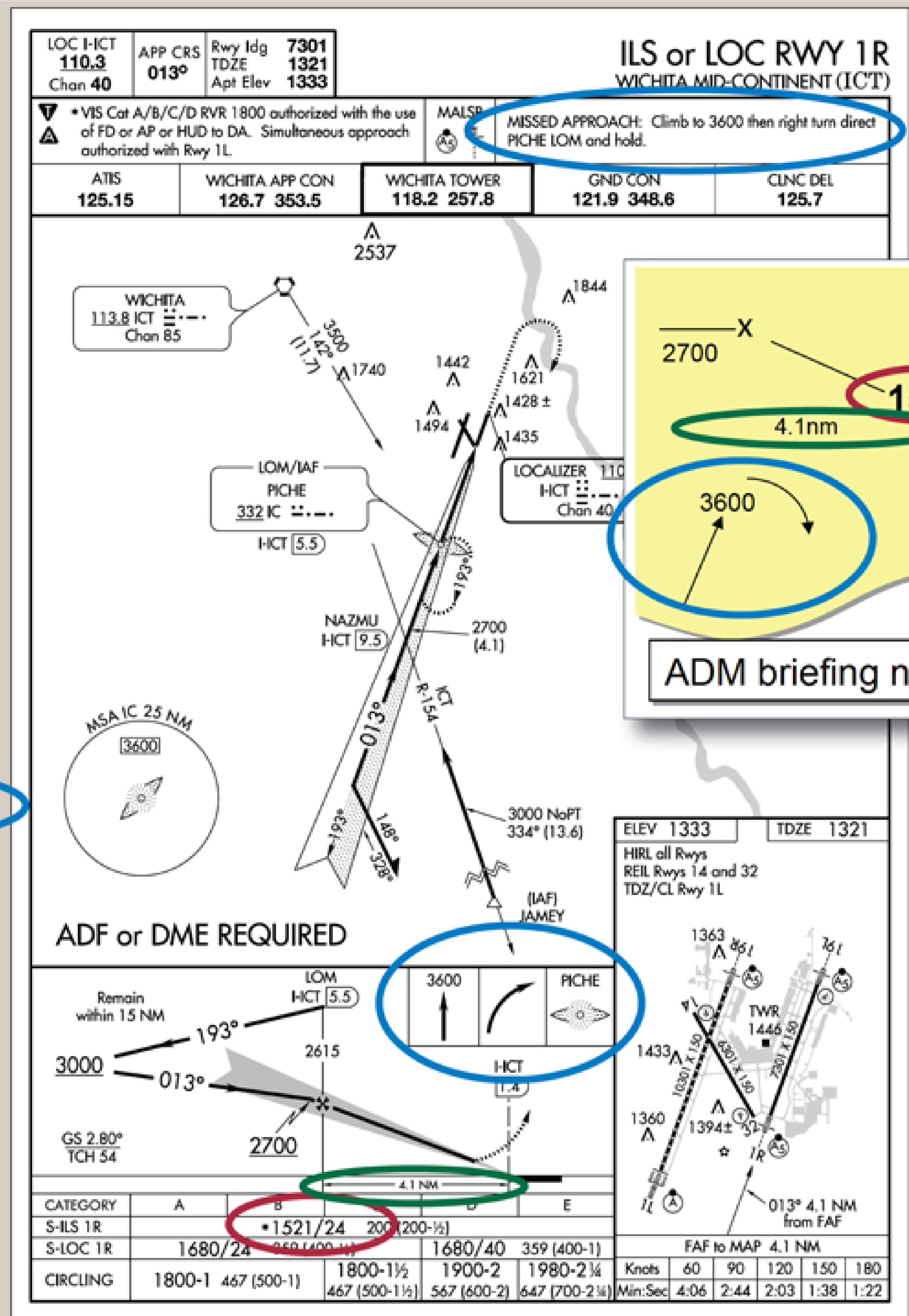
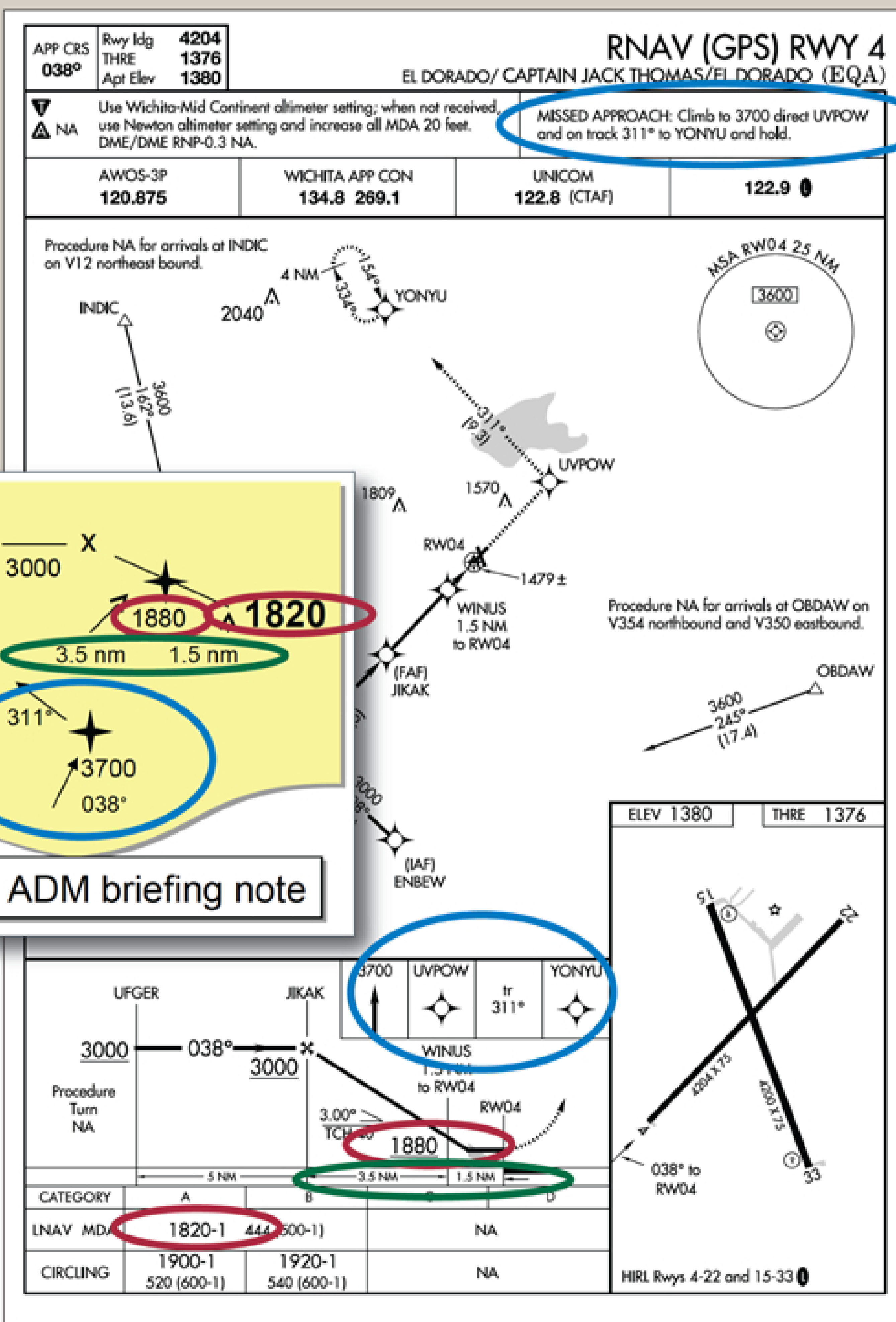


Briefing The Approach

Approach plates contain a wealth of information, some of it redundant, some of it critical, some of it important only in an emergency. But all of it is relevant to the procedure being flown. Separating the wheat of relevant data from the chaff of unnecessary information is something instrument students learn early in their training, or else.

Briefing the approach while still straight and level, i.e., before reaching top of descent and starting down to an initial approach altitude, is the way to go. Whether you use a Post-It note, a highlighter on a paper chart, a pencil and notepaper or some other tool, critical information can include the minimum altitude, distance from IAF to FAF and at least the initial steps on the missed approach procedure.



In these examples, we've circled minimum altitude information in red, distance information in green and the initial missed approach procedure steps in blue. Each is summarized on the briefing note.