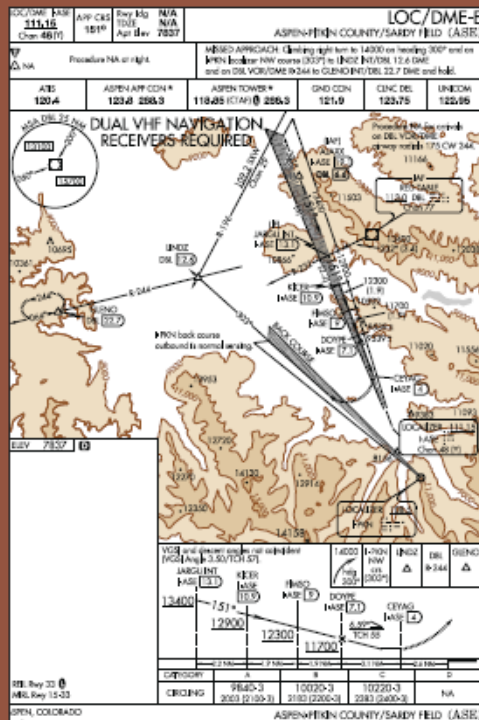


# ASPEN/PITKIN COUNTY: CHOOSE FEWER STEP-DOWNS OR LOWER MDA



Approaches into the Aspen (Colo.)-Pitkin County/Sardy Field are notorious for their multiple step-down fixes (and complicated missed-approach procedures). Compare the LOC/DME-E chart (left) with the RNAV (GPS)-F (right). Although the GPS procedure has fewer step-down fixes, the published MDA is a whopping 360 feet higher than its LOC/DME counterpart.

The typical RNAV (GPS) procedure usually is easier to fly (and probably more accurate) than the LOC/DME, but when arriving ASE amid low ceilings, the LOC/DME is the way to go. Especially if you want to avoid the miss.

